

Handbooks

More information about units of study and degree requirements can be found at the faculty website www.pharm.usyd.edu.au and in the Faculty of Pharmacy handbook, which is available online at www.usyd.edu.au/handbooks.

Fees*

2007 fees, based on 48 credit points, are \$A18,960 for local students (local students are eligible for Fee-HELP – formerly PELS) and \$A26,880 for international students.

*The University's tuition fees are reviewed annually and may be varied during the period of study. The exact tuition fee for your course may depend on the specific units of study in which you enrol.

Information evening (local applicants)

7–9pm 16 November 2006

Herbal Medicines Research and Education Centre
Faculty of Pharmacy
The University of Sydney
NSW 2006 Australia

Phone: +61 2 9351 4435

Fax: +61 2 9351 8638

Email: gli@pharm.usyd.edu.au

Web: www.pharm.usyd.edu.au/HMREC
www.chs.usyd.edu.au/PG



Faculty of Pharmacy Master of Herbal Medicines 2007



Master of Herbal Medicines

Go further than you ever imagined

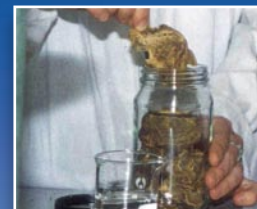
For more information


Herbal Medicines Research
and Education Centre
Faculty of Pharmacy
University of Sydney
NSW 2006 Australia
Phone: +61 2 9351 4435
Fax: +61 2 9351 8638
Email: gli@pharm.usyd.edu.au
Web: www.pharm.usyd.edu.au
www.chs.usyd.edu.au/PG

This brochure was produced by the
Publications Office of the University
of Sydney from information gathered
in July 2006 for use in 2007.

Printed by Impress Colour
CRICOS provider 00026A
06/1210

2007





Master of Herbal Medicines at Sydney Uni

Career enhancement for

- pharmacists
- medical practitioners
- complementary medicine practitioners
- Chinese medicine practitioners
- herbal industry professionals

Objectives

The program is designed to provide health care professionals and science graduates with an advanced education encompassing scientific and pharmaceutical aspects of herbal medicines, and their clinical applications. At the same time candidates will acquire systematic knowledge of traditional Chinese medicine. An honours program will again be offered in 2007.

Admission requirements

The basic entry requirement is a bachelor's degree in pharmacy, medicine, nursing, science, Chinese medicine, complementary medicine, veterinary science, agriculture or other appropriate disciplines from approved universities. Minimum English language requirements also apply.

Program outcomes

Graduates with a pharmacy or medical background will gain appropriate knowledge and skills to enable them to provide information and in-depth advice on herbal products in their practice.

Graduates with a traditional Chinese medicine or medical acupuncture background will extend their scientific and pharmaceutical knowledge underpinning the clinical application and dispensing of Chinese herbal medicines.

Graduates of other scientific disciplines will gain and expand the knowledge and skills necessary for work in manufacturing, teaching and research areas of herbal medicines.

Course structure

Candidates completing 48 credit points qualify for the Master of Herbal Medicines, with an extra 12 credit points needed for the Master of Herbal Medicines Honours component. Students need to complete 36 credit points for the Graduate Diploma in Herbal Medicines, and 24 credit points for the Graduate Certificate in Herbal Medicines.

Units of study

There are four core units of study and seven electives, with suggested elective streams for students wishing to specialise in clinical, industry and dispensary fields.

Core subjects

Botany and Herbal Chemistry
Herbal Pharmacology
Herbal Toxicology
Clinical Studies and Monographs

Elective subjects

Integrative Herbal Therapeutics
Herbal Regulation and Dispensing
Chinese Medicine and Materia Medica
Herbal Pharmaceutics and Analysis
Pharmacognosy
Chinese Herbal Formulas and Processing
Honours Dissertation (for honours candidates)

Course duration

Master of Herbal Medicines – 1 to 2 years full-time or part-time equivalent.

Master of Herbal Medicines (Honours) – 1.5 to 2.5 years full-time or part-time equivalent.

Graduate Diploma in Herbal Medicines – 1 to 1.5 years full-time or part-time equivalent.

Graduate Certificate in Herbal Medicines – 0.5 to 1 year full-time or part-time equivalent.

Timetable

The 2007 intake will commence on 26 February 2007. Five evening sessions (Monday to Friday) will be held each week during semester (about 16 weeks, two semesters each year). They will run from 6pm to 9pm at the Pharmacy Building, Science Road, University of Sydney.

How to apply

The application forms for local students are on the web at the following address:
www.usyd.edu.au/studentcentre/forms/admissions

Completed application forms should be returned to:
Herbal Medicines Research and Education Centre
Faculty of Pharmacy
University of Sydney
NSW 2006

The application form for international students can be downloaded from
www.usyd.edu.au/internationaloffice

Completed application forms should be sent to:
International Office
Services Building G12
University of Sydney NSW 2006
Australia

Closing date

The closing date for applications for commencement in February 2007 is 30 November 2006. Late applications will be considered.

Entry for Semester Two is available.